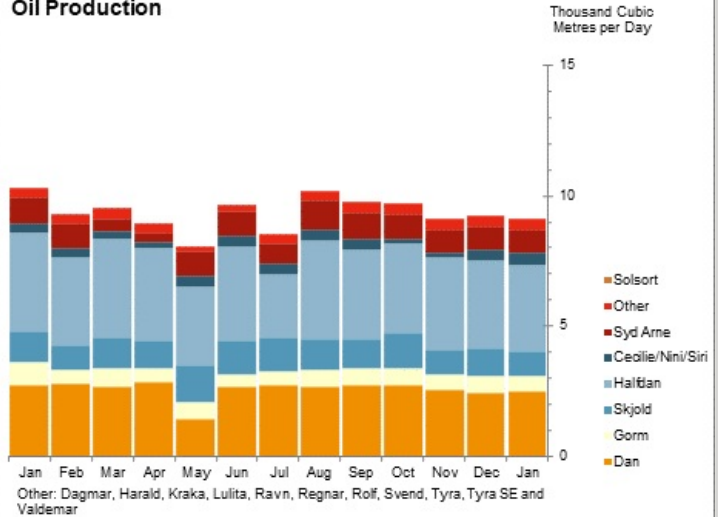


Danish Production of Oil, Gas and Water for January 2024

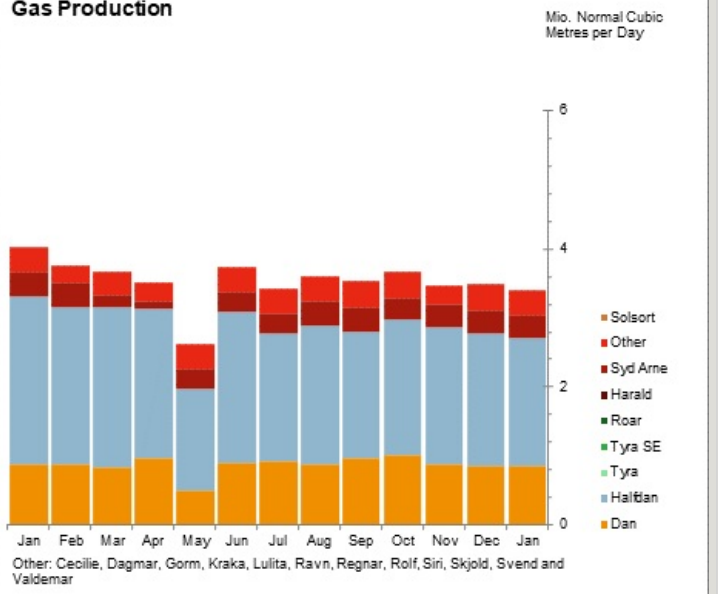
Oil, M m ³	January 2024		Oct23-Dec23	Oct22-Dec22	This year
Field	Monthly	Daily Avg.	Daily Avg.	Daily Avg.	
Dan	76.6	2.5	2.6	2.5	76.6
Gorm	19.0	0.6	0.6	0.7	19.0
Skjold	30.3	1.0	1.1	1.0	30.3
Tyra	-	-	-	-	-
Rolf	3.5	0.1	0.1	0.1	3.5
Kraka	9.6	0.3	0.3	0.2	9.6
Dagmar	-	-	-	-	-
Regnar	-	-	-	-	-
Valdemar	-	-	-	-	-
Roar	-	-	-	-	-
Svend	-	-	-	-	-
Harald	-	-	-	-	-
Lulita	-	-	-	-	-
Halfdan	101.1	3.3	3.4	4.0	101.1
Siri	7.4	0.2	0.1	0.1	7.4
Syd Arne	27.0	0.9	0.9	1.1	27.0
Tyra SE	-	-	-	-	-
Cecilie	2.0	0.1	0.0	0.1	2.0
Nini	5.7	0.2	0.1	0.2	5.7
Ravn	-	-	-	-	-
Solsort	-	-	-	-	-
Total	282.3	9.1	9.4	10.0	282.3

Oil Production



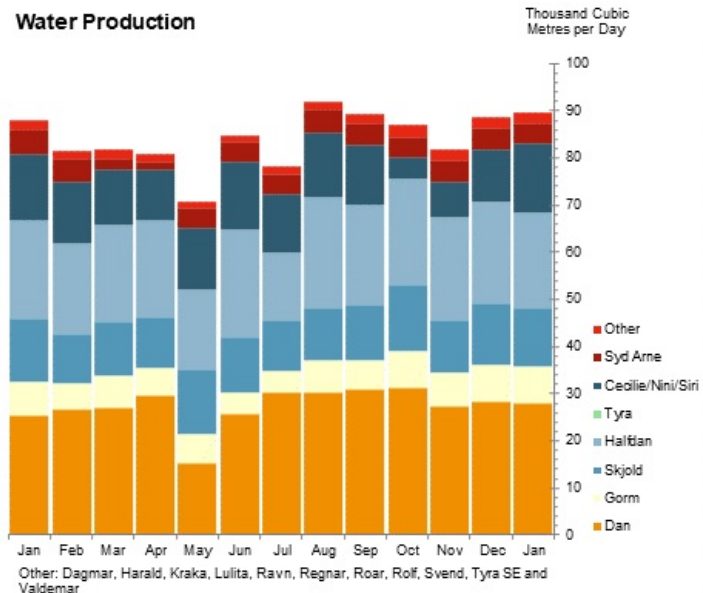
Gas, MM Nm ³	January 2024		Oct23-Dec23	Oct22-Dec22	This year
Field	Monthly	Daily Avg.	Daily Avg.	Daily Avg.	
Dan	26.9	0.9	0.9	0.8	26.9
Gorm	2.4	0.1	0.1	0.1	2.4
Skjold	3.9	0.1	0.2	0.1	3.9
Tyra	-	-	-	-	-
Rolf	0.5	0.0	0.0	0.0	0.5
Kraka	0.8	0.0	0.0	0.0	0.8
Dagmar	-	-	-	-	-
Regnar	-	-	-	-	-
Valdemar	-	-	-	-	-
Roar	-	-	-	-	-
Svend	-	-	-	-	-
Harald	-	-	-	-	-
Lulita	-	-	-	-	-
Halfdan	57.4	1.9	2.0	2.6	57.4
Siri	2.8	0.1	0.0	0.1	2.8
Syd Arne	10.0	0.3	0.3	0.4	10.0
Tyra SE	-	-	-	-	-
Cecilie	0.4	0.0	0.0	0.0	0.4
Nini	0.5	0.0	0.0	0.0	0.5
Ravn	-	-	-	-	-
Solsort	-	-	-	-	-
Total	105.5	3.4	3.5	4.0	105.5

Gas Production



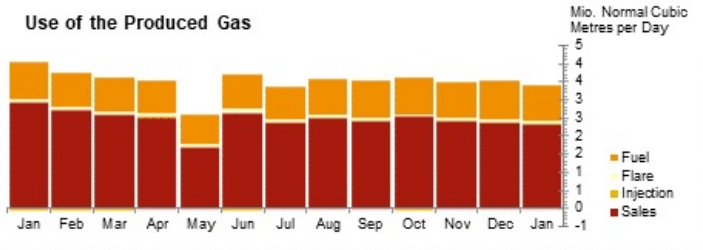
Water, M m ³	January 2024		Oct23-Dec23	Oct22-Dec22	This year
Field	Monthly	Daily Avg.	Daily Avg.	Daily Avg.	
Dan	863.7	27.9	29.0	24.3	863.7
Gorm	247.8	8.0	7.6	5.9	247.8
Skjold	387.5	12.5	12.7	11.9	387.5
Tyra	-	-	-	-	-
Rolf	35.0	1.1	1.2	0.9	35.0
Kraka	36.0	1.2	1.2	0.8	36.0
Dagmar	-	-	-	-	-
Regnar	-	-	-	-	-

Valdemar	-	-	-	-	-
Roar	-	-	-	-	-
Svend	-	-	-	-	-
Harald	-	-	-	-	-
Lulita	-	-	-	-	-
Halfdan	623.6	20.1	21.9	20.3	623.6
Siri	321.4	10.4	4.8	9.7	321.4
Syd Arne	134.5	4.3	4.4	5.5	134.5
Tyra SE	-	-	-	-	-
Cecilie	24.3	0.8	0.6	1.3	24.3
Nini	105.0	3.4	2.5	3.3	105.0
Ravn	-	-	-	-	-
Solsort	-	-	-	-	-
Total	2,778.7	89.6	85.8	83.8	2,778.7



Use of produced gas, MM Nm³

	January 2024		Oct23-Dec23	Oct22-Dec22	This year
	Monthly	Daily Avg.	Daily Avg.	Daily Avg.	
Fuel	30.6	1.0	1.0	1.0	30.6
Flare	1.8	0.1	0.1	0.1	1.8
Injection	0.9	0.0	0.0	0.0	0.9
Sales	71.9	2.3	2.4	3.0	71.9
Total	105.2	3.4	3.5	4.0	105.2



Notes:

Sif and Igor production is included in Halfdan production.

Digit grouping symbol is a dot "." and decimal symbol is a comma ",".

Nm3 (normal cubic metres) is at standard conditions 0°C and 1,01325 bar.

Small differences between the total for "gas" and "use of produced gas" can occur. Earlier these differences were corrected, but this is not done anymore.

Preliminary data for Gas Injection

END