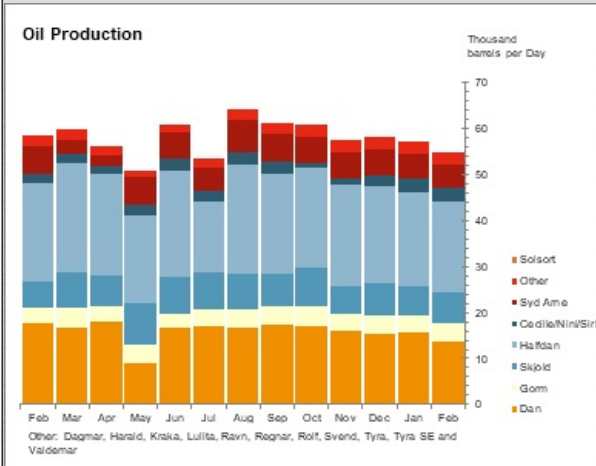
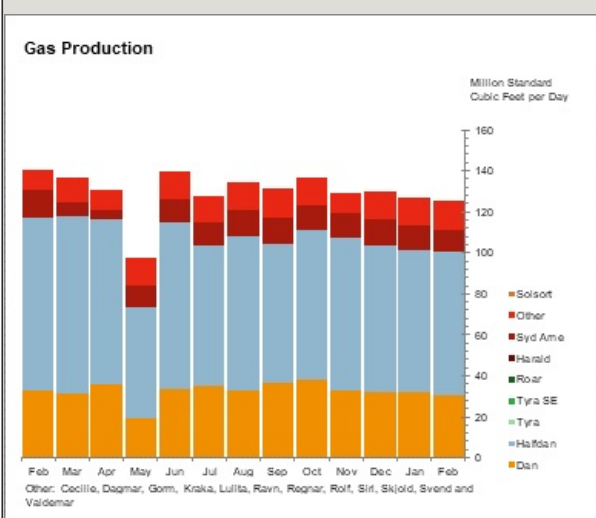


Danish Production of Oil, Gas and Water for February 2024

Oil, 1000 barrels	February 2024		Nov23-Jan24	Nov22-Jan23	This year
	Monthly	Daily Avg.	Daily Avg.	Daily Avg.	
Dan	393.1	13.6	15.6	16.6	875.4
Gorm	117.8	4.1	3.8	4.7	237.6
Skjold	193.8	6.7	6.4	6.2	384.4
Tyra	-	-	-	-	-
Rolf	21.3	0.7	0.7	0.7	43.6
Kraka	52.0	1.8	2.0	1.4	112.3
Dagmar	-	-	-	-	-
Regnar	-	-	-	-	-
Valdemar	-	-	-	-	-
Roar	-	-	-	-	-
Svend	-	-	-	-	-
Harald	-	-	-	-	-
Lulita	-	-	-	-	-
Halfdan	574.6	19.8	21.2	24.4	1,210.9
Siri	42.7	1.5	1.0	0.9	89.5
Syd Arne	150.3	5.2	5.5	6.4	319.9
Tyra SE	-	-	-	-	-
Cecilie	11.3	0.4	0.3	0.4	23.6
Nini	34.7	1.2	1.0	1.1	70.7
Ravn	-	-	-	-	-
Solsort	-	-	-	-	-
Total	1,591.4	54.9	57.7	62.9	3,367.9

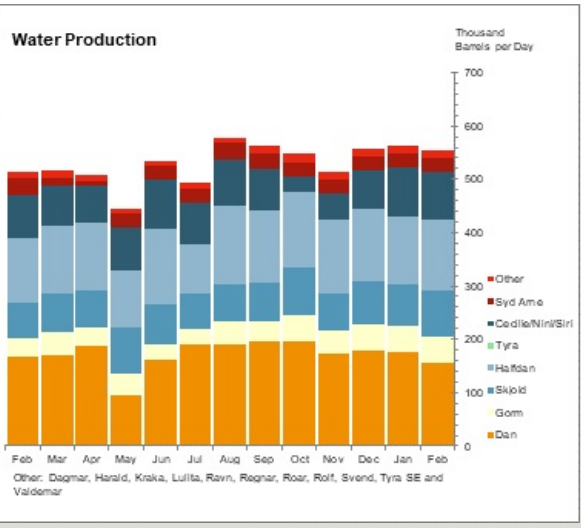


Gas, MMscf	February 2024		Nov23-Jan24	Nov22-Jan23	This year
	Monthly	Daily Avg.	Daily Avg.	Daily Avg.	
Dan	880.1	30.3	32.2	30.4	1,881.8
Gorm	74.1	2.6	3.0	3.3	162.5
Skjold	158.2	5.5	4.8	3.8	302.6
Tyra	-	-	-	-	-
Rolf	18.2	0.6	0.7	0.7	37.6
Kraka	28.2	1.0	1.1	0.6	59.7
Dagmar	-	-	-	-	-
Regnar	-	-	-	-	-
Valdemar	-	-	-	-	-
Roar	-	-	-	-	-
Svend	-	-	-	-	-
Harald	-	-	-	-	-
Lulita	-	-	-	-	-
Halfdan	2,033.4	70.1	71.7	91.6	4,170.0
Siri	94.6	3.3	2.2	2.2	197.3
Syd Arne	319.1	11.0	12.2	13.2	689.6
Tyra SE	-	-	-	-	-
Cecilie	12.9	0.4	0.4	0.4	27.1
Nini	18.0	0.6	0.5	0.5	36.7
Ravn	-	-	-	-	-
Solsort	-	-	-	-	-
Total	3,636.8	125.4	128.7	146.8	7,564.9



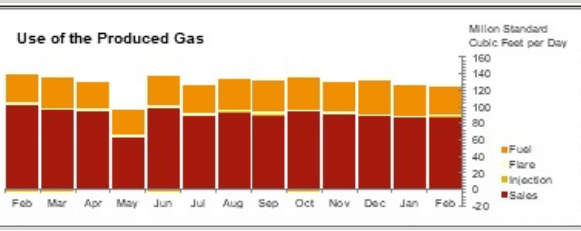
Water, 1000 barrels	February 2024		Nov23-Jan24	Nov22-Jan23	This year
	Monthly	Daily Avg.	Daily Avg.	Daily Avg.	
Dan	4,547.3	156.8	175.5	160.1	9,982.5
Gorm	1,432.7	49.4	48.0	39.9	2,991.9
Skjold	2,463.4	84.9	76.6	74.0	4,901.9
Tyra	-	-	-	-	-
Rolf	236.5	8.2	6.9	5.7	456.8
Kraka	194.9	6.7	7.4	6.1	421.1

Dagmar	-	-	-	-	-
Regnar	-	-	-	-	-
Valdemar	-	-	-	-	-
Roar	-	-	-	-	-
Svend	-	-	-	-	-
Harald	-	-	-	-	-
Lulita	-	-	-	-	-
Halfdan	3,841.8	132.5	133.0	128.7	7,766.1
Siri	1,834.1	63.2	47.0	59.1	3,856.6
Syd Arne	737.7	25.4	27.6	32.6	1,583.9
Tyra SE	-	-	-	-	-
Cecilie	144.6	5.0	4.5	8.4	297.3
Nini	664.7	22.9	19.1	18.9	1,325.8
Ravn	-	-	-	-	-
Solsort	-	-	-	-	-
Total	16,097.8	555.1	545.7	533.4	33,584.0



Use of produced gas, MMscf

	February 2024		Nov23-Jan24	Nov22-Jan23	This year
	Monthly	Daily Avg.	Daily Avg.	Daily Avg.	
Fuel	998.0	34.4	37.2	36.6	2,137.1
Flare	65.0	2.2	2.7	3.0	132.6
Injection	24.9	0.9	0.9	-	60.0
Sales	2,546.1	87.8	88.2	107.7	5,222.6
Total	3,634.1	125.3	129.0	147.2	7,552.4



Notes:

Sif and Igor production is included in Halfdan production.

Digit grouping symbol is a dot "." and decimal symbol is a comma ",".

Nm3 (normal cubic metres) is at standard conditions 0°C and 1,01325 bar.

Small differences between the total for "gas" and "use of produced gas" can occur. Earlier these differences were corrected, but this is not done anymore.

Preliminary data for Gas Injection

END