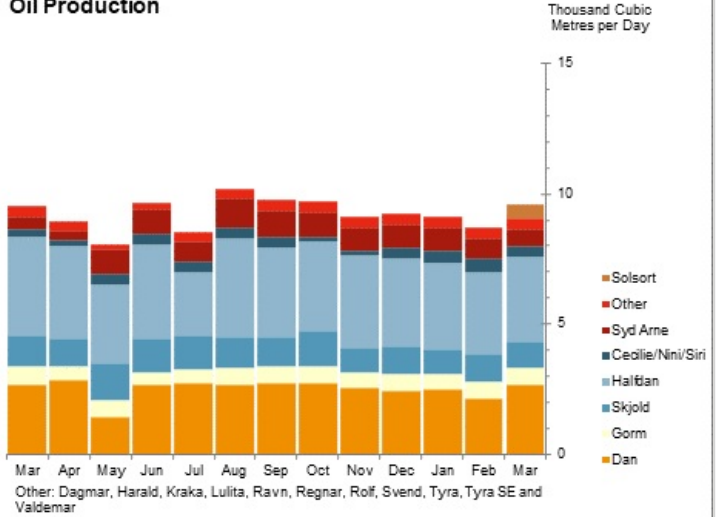


Danish Production of Oil, Gas and Water for March 2024

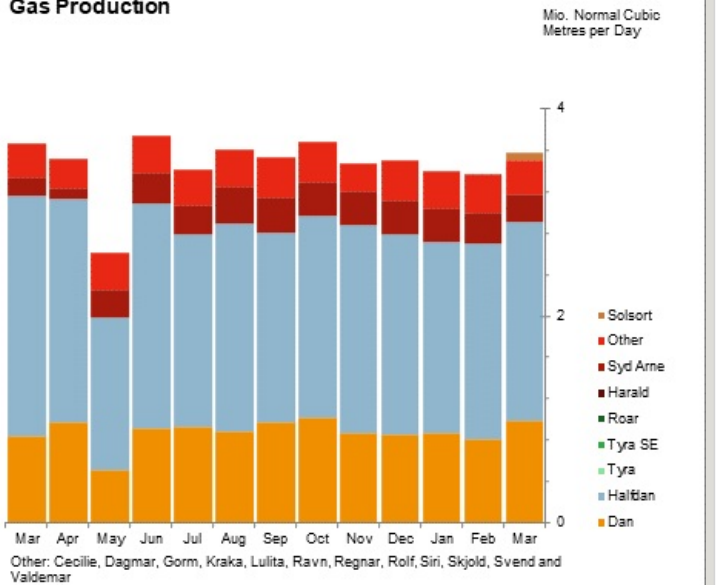
Oil, M m ³	March 2024		Dec23-Feb24	Dec22-Feb23	This year
Field	Monthly	Daily Avg.	Daily Avg.	Daily Avg.	
Dan	82.4	2.7	2.4	2.7	221.5
Gorm	19.9	0.6	0.6	0.6	57.7
Skjold	31.4	1.0	1.0	0.9	92.4
Tyra	-	-	-	-	-
Rolf	2.4	0.1	0.1	0.1	9.3
Kraka	9.7	0.3	0.3	0.2	27.5
Dagmar	-	-	-	-	-
Regnar	-	-	-	-	-
Valdemar	-	-	-	-	-
Roar	-	-	-	-	-
Svend	-	-	-	-	-
Harald	-	-	-	-	-
Lulita	-	-	-	-	-
Halfdan	101.3	3.3	3.3	3.7	293.7
Siri	5.9	0.2	0.2	0.1	20.1
Syd Arne	21.3	0.7	0.9	1.0	72.1
Tyra SE	-	-	-	-	-
Cecilie	1.5	0.0	0.1	0.1	5.2
Nini	5.3	0.2	0.2	0.1	16.6
Ravn	-	-	-	-	-
Solsort	16.0	0.5	-	-	16.0
Total	297.0	9.6	9.0	9.7	832.2

Oil Production



Gas, MM Nm ³	March 2024		Dec23-Feb24	Dec22-Feb23	This year
Field	Monthly	Daily Avg.	Daily Avg.	Daily Avg.	
Dan	30.8	1.0	0.8	0.9	81.4
Gorm	2.2	0.1	0.1	0.1	6.6
Skjold	4.1	0.1	0.1	0.1	12.2
Tyra	-	-	-	-	-
Rolf	0.3	0.0	0.0	0.0	1.4
Kraka	0.8	0.0	0.0	0.0	2.4
Dagmar	-	-	-	-	-
Regnar	-	-	-	-	-
Valdemar	-	-	-	-	-
Roar	-	-	-	-	-
Svend	-	-	-	-	-
Harald	-	-	-	-	-
Lulita	-	-	-	-	-
Halfdan	59.3	1.9	1.9	2.4	171.3
Siri	2.0	0.1	0.1	0.1	7.3
Syd Arne	8.1	0.3	0.3	0.4	26.6
Tyra SE	-	-	-	-	-
Cecilie	0.3	0.0	0.0	0.0	1.0
Nini	0.5	0.0	0.0	0.0	1.4
Ravn	-	-	-	-	-
Solsort	2.6	0.1	-	-	2.6
Total	111.0	3.6	3.4	3.9	314.2

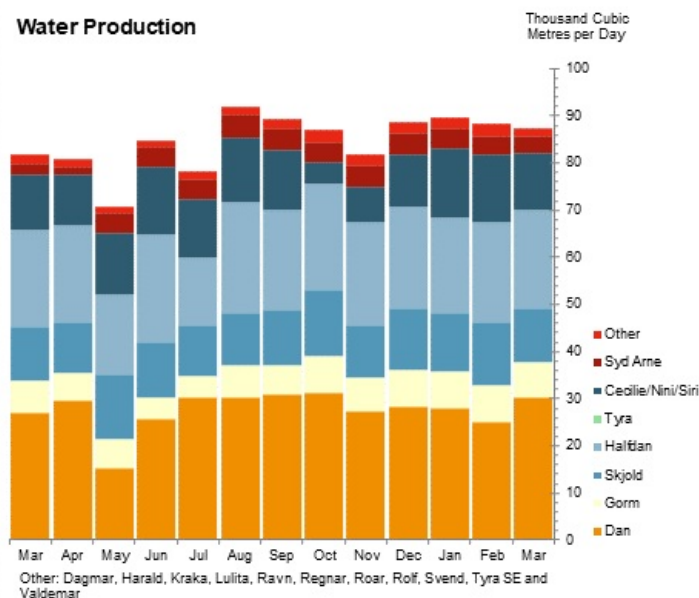
Gas Production



Water, M m ³	March 2024		Dec23-Feb24	Dec22-Feb23	This year
Field	Monthly	Daily Avg.	Daily Avg.	Daily Avg.	
Dan	934.9	30.2	27.1	26.1	2,521.2
Gorm	233.8	7.5	7.9	5.9	709.3
Skjold	358.9	11.6	12.9	10.7	1,137.9
Tyra	-	-	-	-	-
Rolf	24.9	0.8	1.2	0.8	97.4
Kraka	34.7	1.1	1.1	1.0	101.6
Dagmar	-	-	-	-	-
Regnar	-	-	-	-	-

Valdemar	-	-	-	-	-
Roar	-	-	-	-	-
Svend	-	-	-	-	-
Harald	-	-	-	-	-
Lulita	-	-	-	-	-
Halfdan	644.1	20.8	20.9	20.2	1,878.2
Siri	243.6	7.9	9.2	9.1	856.4
Syd Arne	110.8	3.6	4.3	5.0	362.5
Tyra SE	-	-	-	-	-
Cecilie	21.0	0.7	0.8	1.3	68.3
Nini	106.0	3.4	3.5	2.8	316.7
Ravn	-	-	-	-	-
Solsort	-	-	-	-	-
Total	2,712.7	87.5	88.9	82.9	8,049.5

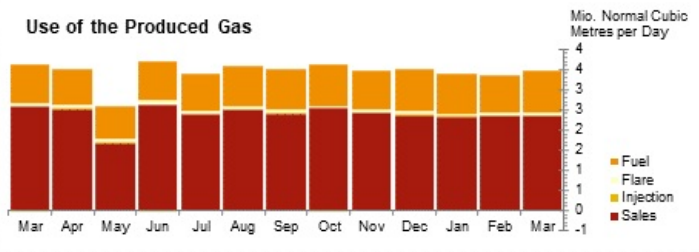
Water Production



Use of produced gas, MM Nm³

	March 2024		Dec23-Feb24	Dec22-Feb23	This year
	Monthly	Daily Avg.	Daily Avg.	Daily Avg.	
Fuel	32.1	1.0	1.0	1.0	89.5
Flare	2.2	0.1	0.1	0.1	5.8
Injection	0.6	0.0	0.0	-	2.2
Sales	72.7	2.3	2.3	2.8	213.0
Total	107.6	3.5	3.4	3.9	310.4

Use of the Produced Gas



Notes:

Sif and Igor production is included in Halfdan production.

Digit grouping symbol is a dot "." and decimal symbol is a comma ",".

Nm3 (normal cubic metres) is at standard conditions 0°C and 1,01325 bar.

Small differences between the total for "gas" and "use of produced gas" can occur. Earlier these differences were corrected, but this is not done anymore.

Preliminary data for Gas Injection

END