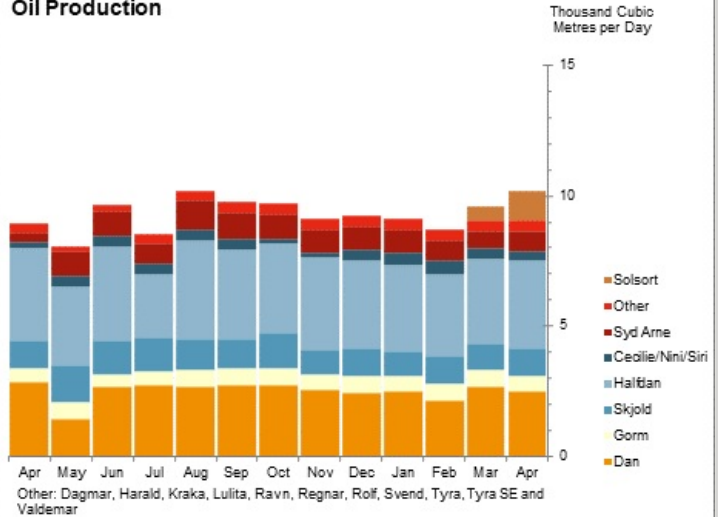


Danish Production of Oil, Gas and Water for April 2024

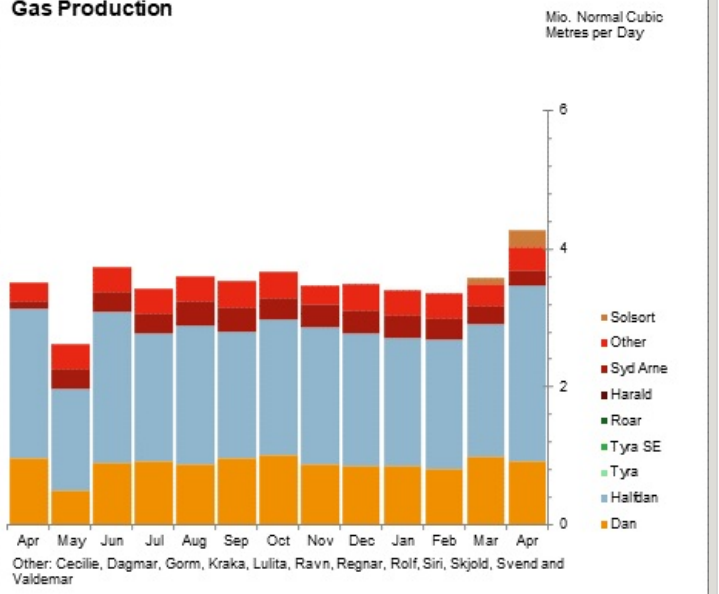
Oil, M m ³	April 2024		Jan24-Mar24	Jan23-Mar23	This year
Field	Monthly	Daily Avg.	Daily Avg.	Daily Avg.	
Dan	75.1	2.5	2.4	2.7	296.6
Gorm	17.6	0.6	0.6	0.7	75.3
Skjold	31.4	1.0	1.0	1.1	123.8
Tyra	-	-	-	-	-
Rolf	3.2	0.1	0.1	0.1	12.5
Kraka	9.0	0.3	0.3	0.2	36.5
Dagmar	-	-	-	-	-
Regnar	-	-	-	-	-
Valdemar	-	-	-	-	-
Roar	-	-	-	-	-
Svend	-	-	-	-	-
Harald	-	-	-	-	-
Lulita	-	-	-	-	-
Halfdan	101.2	3.4	3.2	3.6	394.9
Siri	5.2	0.2	0.2	0.1	25.3
Syd Arne	23.7	0.8	0.8	0.8	95.9
Tyra SE	-	-	-	-	-
Cecilie	1.2	0.0	0.1	0.1	6.4
Nini	4.1	0.1	0.2	0.1	20.7
Ravn	-	-	-	-	-
Solsort	33.5	1.1	0.2	-	49.5
Total	305.2	10.2	9.1	9.7	1,137.3

Oil Production



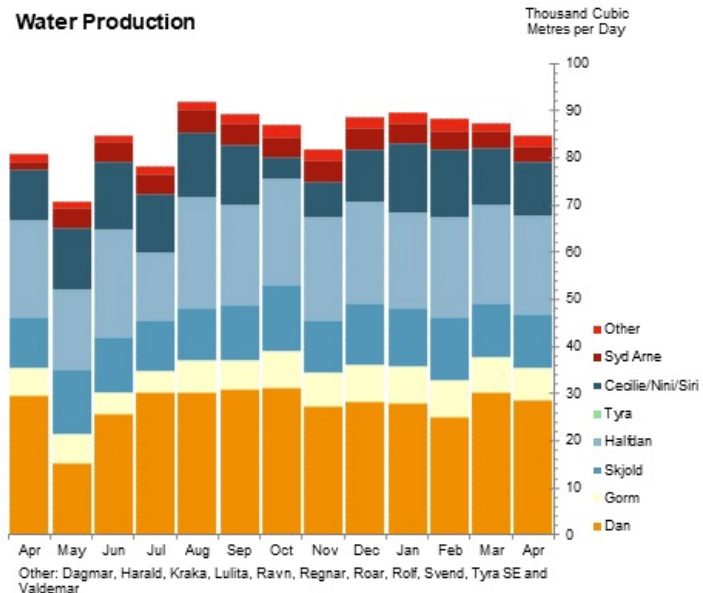
Gas, MM Nm ³	April 2024		Jan24-Mar24	Jan23-Mar23	This year
Field	Monthly	Daily Avg.	Daily Avg.	Daily Avg.	
Dan	27.5	0.9	0.9	0.9	108.9
Gorm	2.3	0.1	0.1	0.1	8.9
Skjold	4.0	0.1	0.1	0.1	16.2
Tyra	-	-	-	-	-
Rolf	0.6	0.0	0.0	0.0	2.0
Kraka	0.6	0.0	0.0	0.0	3.0
Dagmar	-	-	-	-	-
Regnar	-	-	-	-	-
Valdemar	-	-	-	-	-
Roar	-	-	-	-	-
Svend	-	-	-	-	-
Harald	-	-	-	-	-
Lulita	-	-	-	-	-
Halfdan	76.7	2.6	1.9	2.3	248.0
Siri	2.2	0.1	0.1	0.1	9.5
Syd Arne	6.5	0.2	0.3	0.3	33.1
Tyra SE	-	-	-	-	-
Cecilie	0.2	0.0	0.0	0.0	1.2
Nini	0.4	0.0	0.0	0.0	1.8
Ravn	-	-	-	-	-
Solsort	7.3	0.2	0.0	-	9.9
Total	128.2	4.3	3.5	3.8	442.4

Gas Production

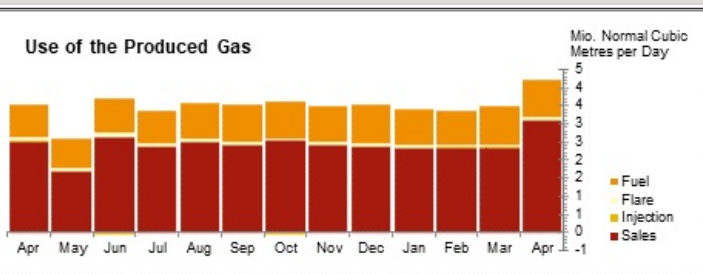


Water, M m ³	April 2024		Jan24-Mar24	Jan23-Mar23	This year
Field	Monthly	Daily Avg.	Daily Avg.	Daily Avg.	
Dan	861.7	28.7	27.7	26.4	3,382.9
Gorm	207.9	6.9	7.8	6.6	917.1
Skjold	335.7	11.2	12.5	11.7	1,473.6
Tyra	-	-	-	-	-
Rolf	33.4	1.1	1.1	1.0	130.9
Kraka	34.1	1.1	1.1	1.0	135.7
Dagmar	-	-	-	-	-
Regnar	-	-	-	-	-

Valdemar	-	-	-	-	-
Roar	-	-	-	-	-
Svend	-	-	-	-	-
Harald	-	-	-	-	-
Lulita	-	-	-	-	-
Halfdan	626.8	20.9	20.6	20.3	2,505.0
Siri	241.8	8.1	9.4	8.9	1,098.2
Syd Arne	93.3	3.1	4.0	4.1	455.9
Tyra SE	-	-	-	-	-
Cecilie	18.9	0.6	0.8	1.2	87.2
Nini	86.8	2.9	3.5	2.8	403.5
Ravn	-	-	-	-	-
Solsort	-	-	-	-	-
Total	2,540.5	84.7	88.5	83.9	10,590.0



	April 2024		Jan24-Mar24	Jan23-Mar23	This year
	Monthly	Daily Avg.	Daily Avg.	Daily Avg.	
Fuel	31.1	1.0	1.0	1.0	120.6
Flare	2.0	0.1	0.1	0.1	7.7
Injection	0.6	0.0	0.0	-	2.7
Sales	92.6	3.1	2.3	2.7	305.6
Total	126.2	4.2	3.4	3.8	436.6



Notes:

Sif and Igor production is included in Halfdan production.

Digit grouping symbol is a dot "." and decimal symbol is a comma ",".

Nm3 (normal cubic metres) is at standard conditions 0°C and 1,01325 bar.

Small differences between the total for "gas" and "use of produced gas" can occur. Earlier these differences were corrected, but this is not done anymore.

Preliminary data for Gas Injection

END