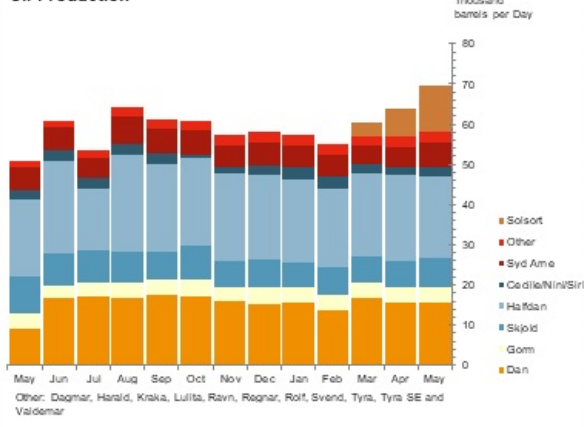


Danish Production of Oil, Gas and Water for May 2024

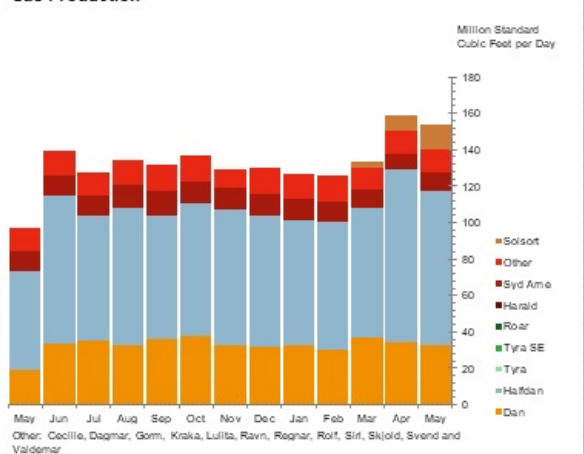
Oil, 1000 barrels	May 2024		Feb24-Apr24	Feb23-Apr23	This year
Field	Monthly	Daily Avg.	Daily Avg.	Daily Avg.	
Dan	479.2	15.5	15.4	17.5	2,345.7
Gorm	123.3	4.0	3.9	3.7	597.0
Skjold	225.8	7.3	6.5	6.7	1,004.9
Tyra	-	-	-	-	-
Rolf	27.8	0.9	0.6	0.7	106.6
Kraka	57.5	1.9	1.9	1.6	287.1
Dagmar	-	-	-	-	-
Regnar	-	-	-	-	-
Valdemar	-	-	-	-	-
Roar	-	-	-	-	-
Svend	-	-	-	-	-
Harald	-	-	-	-	-
Lulita	-	-	-	-	-
Halfdan	629.3	20.3	20.5	22.4	3,114.5
Siri	35.5	1.1	1.2	0.8	194.6
Syd Arne	178.6	5.8	4.8	3.7	781.9
Tyra SE	-	-	-	-	-
Cecilie	7.0	0.2	0.3	0.3	47.4
Nini	33.9	1.1	1.0	0.9	164.2
Ravn	-	-	-	-	-
Solsort	361.9	11.7	3.5	-	673.4
Total	2,160.0	69.7	59.8	58.2	9,317.2

Oil Production



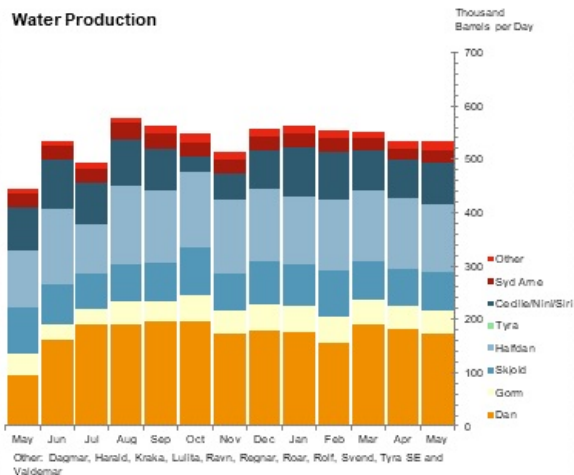
Gas, MMscf	May 2024		Feb24-Apr24	Feb23-Apr23	This year
Field	Monthly	Daily Avg.	Daily Avg.	Daily Avg.	
Dan	1,017.3	32.8	33.9	33.4	5,071.9
Gorm	75.6	2.4	2.7	2.7	405.3
Skjold	150.6	4.9	5.1	4.0	752.5
Tyra	-	-	-	-	-
Rolf	49.1	1.6	0.6	0.7	122.5
Kraka	21.6	0.7	0.9	0.7	134.8
Dagmar	-	-	-	-	-
Regnar	-	-	-	-	-
Valdemar	-	-	-	-	-
Roar	-	-	-	-	-
Svend	-	-	-	-	-
Harald	-	-	-	-	-
Lulita	-	-	-	-	-
Halfdan	2,624.3	84.7	78.9	83.8	11,859.4
Siri	85.9	2.8	2.8	1.9	438.8
Syd Arne	301.8	9.7	9.6	7.8	1,534.9
Tyra SE	-	-	-	-	-
Cecilie	8.0	0.3	0.4	0.3	54.2
Nini	17.6	0.6	0.5	0.4	84.8
Ravn	-	-	-	-	-
Solsort	420.3	13.6	4.1	-	787.5
Total	4,772.1	153.9	139.4	135.7	21,246.5

Gas Production



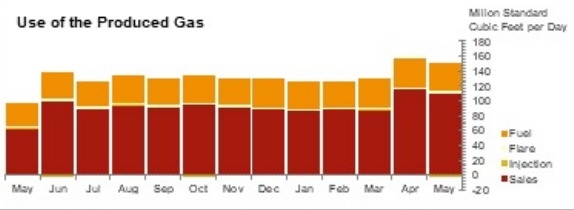
Water, 1000 barrels	May 2024		Feb24-Apr24	Feb23-Apr23	This year
Field	Monthly	Daily Avg.	Daily Avg.	Daily Avg.	
Dan	5,366.1	173.1	176.2	175.3	26,654.8
Gorm	1,367.8	44.1	46.8	37.6	7,139.2
Skjold	2,189.3	70.6	75.9	68.5	11,462.8
Tyra	-	-	-	-	-
Rolf	264.3	8.5	6.7	5.7	1,088.0
Kraka	213.0	6.9	7.0	5.7	1,066.8

Dagmar	-	-	-	-	-
Regnar	-	-	-	-	-
Valdemar	-	-	-	-	-
Roar	-	-	-	-	-
Svend	-	-	-	-	-
Harald	-	-	-	-	-
Lulita	-	-	-	-	-
Halfdan	3,925.5	126.6	131.6	127.0	19,689.4
Siri	1,669.3	53.8	54.3	50.1	8,580.2
Syd Arne	780.7	25.2	22.5	18.4	3,649.4
Tyra SE	-	-	-	-	-
Cecilie	106.8	3.4	4.4	7.0	655.6
Nini	636.5	20.5	20.9	17.0	3,175.8
Ravn	-	-	-	-	-
Solsort	-	-	-	-	-
Total	16,519.3	532.9	546.2	512.4	83,161.9



Use of produced gas, MMscf

	May 2024		Feb24-Apr24	Feb23-Apr23	This year
	Monthly	Daily Avg.	Daily Avg.	Daily Avg.	
Fuel	1,172.3	37.8	37.3	34.7	5,664.3
Flare	76.4	2.5	2.4	3.2	364.1
Injection	-	-	0.7	-	99.5
Sales	3,418.4	110.3	96.7	97.2	14,797.5
Total	4,667.1	150.6	137.1	135.2	20,925.4



Notes:

Sif and Igor production is included in Halfdan production.

Digit grouping symbol is a dot "." and decimal symbol is a comma ",".

Nm3 (normal cubic metres) is at standard conditions 0°C and 1,01325 bar.

Small differences between the total for "gas" and "use of produced gas" can occur. Earlier these differences were corrected, but this is not done anymore.

Preliminary data for Gas Injection

END