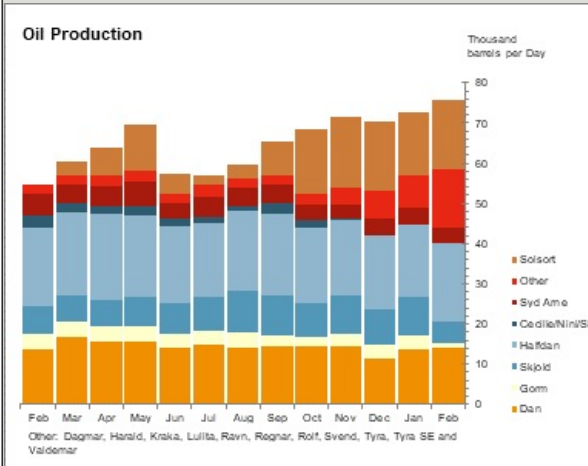
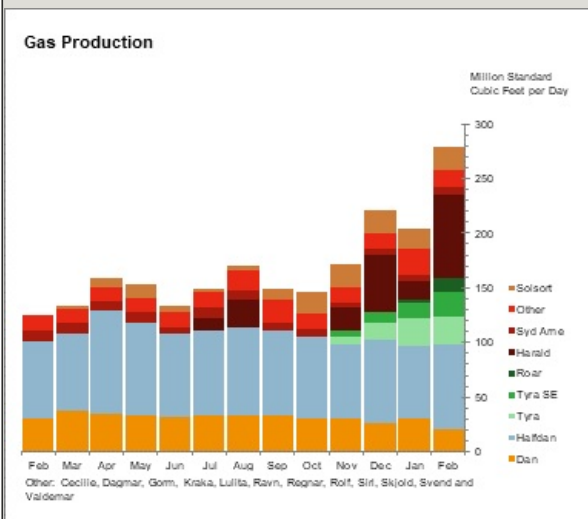


Danish Production of Oil, Gas and Water for February 2025

Oil, 1000 barrels	February 2025		Nov24-Jan25	Nov23-Jan24	This year
	Monthly	Daily Avg.	Daily Avg.	Daily Avg.	
Dan	394.5	14.1	13.2	15.6	822.9
Gorm	37.4	1.3	3.4	3.8	143.3
Skjold	145.5	5.2	9.4	6.4	442.2
Tyra	40.3	1.4	1.0	-	84.8
Rolf	0.0	0.0	0.5	0.7	14.9
Kraka	-	-	1.5	2.0	31.4
Dagmar	-	-	-	-	-
Regnar	-	-	-	-	-
Valdemar	146.1	5.2	1.4	-	265.9
Roar	45.6	1.6	0.1	-	54.0
Svend	-	-	-	-	-
Harald	140.1	5.0	1.6	-	159.8
Lulita	-	-	-	-	-
Halfdan	547.0	19.5	18.2	21.2	1,101.3
Siri	-	-	0.0	1.0	-
Syd Arne	102.8	3.7	3.9	5.5	231.6
Tyra SE	36.9	1.3	0.3	-	45.1
Cecilie	-	-	-	0.3	-
Nini	-	-	0.1	1.0	-
Ravn	-	-	-	-	-
Solsort	486.1	17.4	16.9	-	982.2
Total	2,122.5	75.8	71.5	57.7	4,379.3

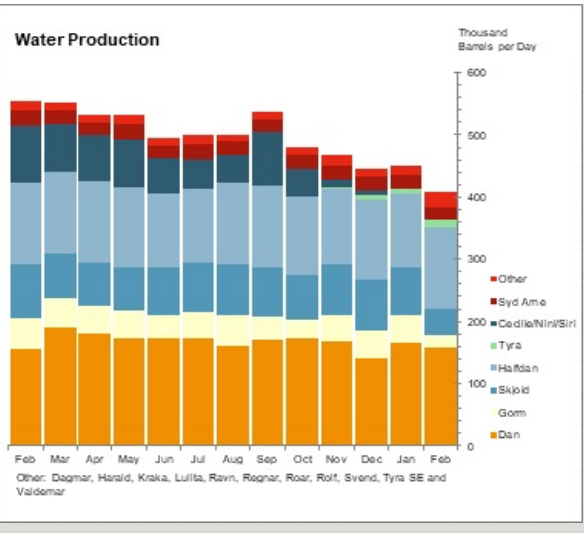


Gas, MMscf	February 2025		Nov24-Jan25	Nov23-Jan24	This year
	Monthly	Daily Avg.	Daily Avg.	Daily Avg.	
Dan	563.3	20.1	28.8	32.2	1,505.0
Gorm	24.1	0.9	1.9	3.0	80.1
Skjold	184.8	6.6	10.4	4.8	534.8
Tyra	737.8	26.3	16.0	-	1,507.1
Rolf	0.0	0.0	0.8	0.7	25.1
Kraka	-	-	0.7	1.1	13.1
Dagmar	-	-	-	-	-
Regnar	-	-	-	-	-
Valdemar	246.0	8.8	3.0	-	507.2
Roar	376.9	13.5	0.8	-	454.4
Svend	-	-	-	-	-
Harald	2,131.1	76.1	30.0	-	2,677.9
Lulita	-	-	-	-	-
Halfdan	2,175.5	77.7	70.5	71.7	4,243.4
Siri	-	-	0.0	2.2	-
Syd Arne	171.9	6.1	5.8	12.2	349.0
Tyra SE	613.1	21.9	10.3	-	1,064.2
Cecilie	-	-	-	0.3	-
Nini	-	-	0.1	0.5	-
Ravn	-	-	-	-	-
Solsort	571.2	20.4	20.1	-	1,164.1
Total	7,795.7	278.4	199.1	128.7	14,125.5



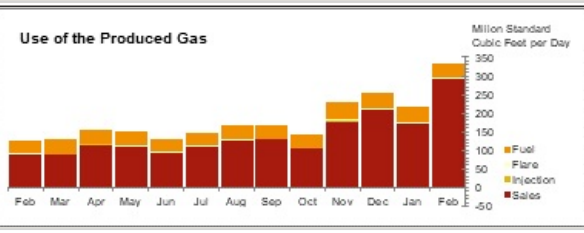
Water, 1000 barrels	February 2025		Nov24-Jan25	Nov23-Jan24	This year
	Monthly	Daily Avg.	Daily Avg.	Daily Avg.	
Dan	4,423.2	158.0	158.3	175.5	9,574.1
Gorm	545.6	19.5	43.1	48.0	1,901.1
Skjold	1,196.1	42.7	80.9	76.6	3,608.0
Tyra	287.8	10.3	7.2	-	529.3
Rolf	0.0	0.0	5.6	6.9	162.2
Kraka	-	-	4.3	7.4	87.9

Dagmar	-	-	-	-	-
Regnar	-	-	-	-	-
Valdemar	81.3	2.9	1.2	-	173.8
Roar	407.0	14.5	0.6	-	464.8
Svend	-	-	-	-	-
Harald	18.1	0.6	0.6	-	23.5
Lulita	-	-	-	-	-
Halfdan	3,696.8	132.0	121.9	133.0	7,347.5
Siri	-	-	3.6	47.0	-
Syd Arne	610.2	21.8	22.1	27.6	1,293.4
Tyra SE	150.4	5.4	1.9	-	184.2
Cecilie	-	-	-	4.5	-
Nini	-	-	2.4	19.1	-
Ravn	-	-	-	-	-
Solsort	-	-	-	-	-
Total	11,416.5	407.7	453.7	545.7	25,349.8



Use of produced gas, MMscf

	February 2025		Nov24-Jan25	Nov23-Jan24	This year
	Monthly	Daily Avg.	Daily Avg.	Daily Avg.	
Fuel	1,058.1	37.8	41.1	37.2	2,280.4
Flare	71.5	2.6	3.6	2.7	167.3
Injection	5.3	0.2	1.2	0.9	-
Sales	8,184.2	292.3	186.2	88.2	13,544.4
Total	9,319.2	332.8	232.2	129.0	15,992.1



Notes:

Sif and Igor production is included in Halfdan production.

Digit grouping symbol is a dot "." and decimal symbol is a comma ",".

Nm3 (normal cubic metres) is at standard conditions 0°C and 1,01325 bar.

Small differences between the total for "gas" and "use of produced gas" can occur. Earlier these differences were corrected, but this is not done anymore.

Preliminary data for Gas Injection

END