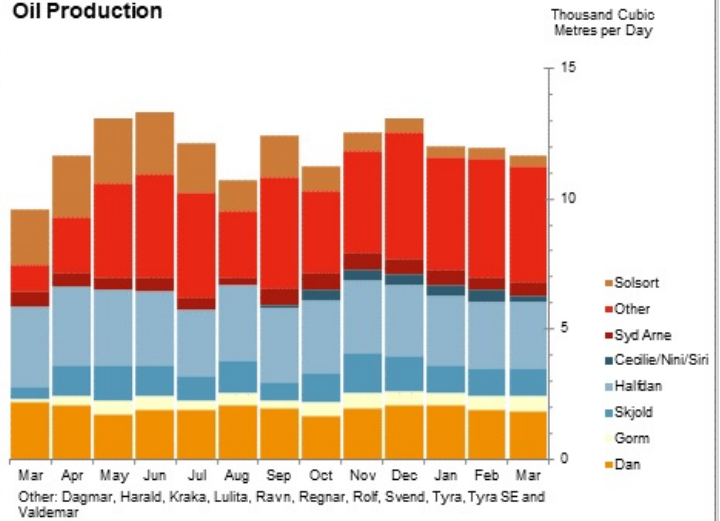


Danish Production of Oil, Gas and Water for March 2026

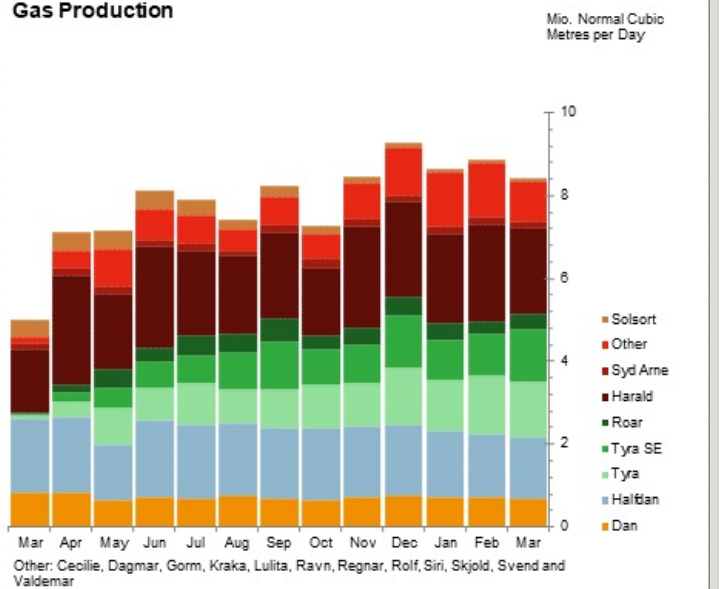
Oil, M m ³	March 2026		Dec25-Feb26	Dec24-Feb25	This year
Field	Monthly	Daily Avg.	Daily Avg.	Daily Avg.	
Dan	57.5	1.9	2.0	2.0	176.7
Gorm	17.4	0.6	0.5	0.4	45.7
Skjold	34.4	1.1	1.2	1.3	97.9
Tyra	33.4	1.1	1.3	0.4	110.8
Rolf	3.1	0.1	0.1	0.1	5.5
Kraka	9.8	0.3	0.4	0.2	32.8
Dagmar	-	-	-	-	-
Regnar	-	-	-	-	-
Valdemar	43.7	1.4	1.5	0.3	122.4
Roar	5.2	0.2	0.1	0.1	11.7
Svend	-	-	-	-	-
Harald	20.0	0.6	0.6	0.5	59.3
Lulita	-	-	-	-	-
Halfdan	77.6	2.5	2.6	2.9	229.4
Siri	3.4	0.1	0.2	0.0	16.1
Syd Arne	15.7	0.5	0.5	0.6	47.5
Tyra SE	21.8	0.7	0.6	0.1	54.9
Cecilie	1.1	0.0	0.1	-	4.3
Nini	3.7	0.1	0.2	0.0	15.1
Ravn	-	-	-	-	-
Solsort	12.9	0.4	0.5	2.7	38.7
Total	360.7	11.6	12.4	11.6	1,068.9

Oil Production



Gas, MM Nm ³	March 2026		Dec25-Feb26	Dec24-Feb25	This year
Field	Monthly	Daily Avg.	Daily Avg.	Daily Avg.	
Dan	21.1	0.7	0.7	0.8	64.0
Gorm	4.1	0.1	0.1	0.0	10.3
Skjold	7.5	0.2	0.3	0.3	22.1
Tyra	41.3	1.3	1.4	0.6	119.4
Rolf	0.7	0.0	0.0	0.0	1.2
Kraka	0.7	0.0	0.0	0.0	2.2
Dagmar	-	-	-	-	-
Regnar	-	-	-	-	-
Valdemar	13.2	0.4	0.6	0.1	52.3
Roar	11.8	0.4	0.4	0.1	32.9
Svend	-	-	-	-	-
Harald	63.9	2.1	2.3	1.3	197.1
Lulita	-	-	-	-	-
Halfdan	46.6	1.5	1.6	1.9	139.2
Siri	3.5	0.1	0.2	0.0	17.9
Syd Arne	4.6	0.1	0.2	0.2	13.8
Tyra SE	39.0	1.3	1.1	0.4	96.3
Cecilie	0.2	0.0	0.0	-	0.8
Nini	0.3	0.0	0.0	0.0	1.3
Ravn	-	-	-	-	-
Solsort	2.4	0.1	0.1	0.5	7.1
Total	260.9	8.4	8.9	6.3	778.0

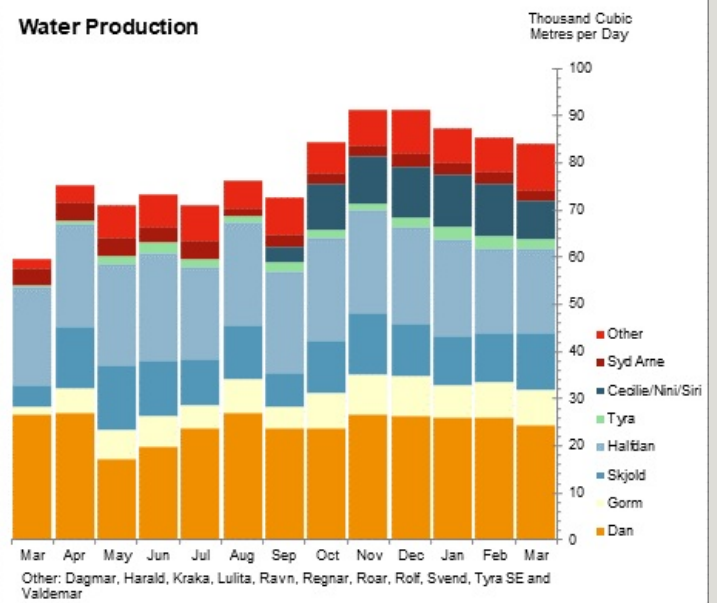
Gas Production



Water, M m ³	March 2026		Dec25-Feb26	Dec24-Feb25	This year
Field	Monthly	Daily Avg.	Daily Avg.	Daily Avg.	
Dan	755.8	24.4	26.2	24.1	2,293.7

Gorm	237.0	7.6	7.5	5.8	655.5
Skjold	366.6	11.8	10.7	10.8	984.5
Tyra	60.6	2.0	2.4	1.5	220.0
Rolf	34.9	1.1	0.6	0.6	61.9
Kraka	37.3	1.2	1.3	0.9	115.0
Dagmar	-	-	-	-	-
Regnar	-	-	-	-	-
Valdemar	60.3	1.9	3.0	0.3	226.0
Roar	106.7	3.4	2.1	0.8	211.0
Svend	-	-	-	-	-
Harald	-	-	-	0.1	-
Lulita	-	-	-	-	-
Halfdan	559.8	18.1	19.7	20.0	1,699.9
Siri	144.7	4.7	6.3	0.2	522.8
Syd Arne	77.1	2.5	2.8	3.5	233.2
Tyra SE	57.3	1.8	1.0	0.5	106.5
Cecilie	21.6	0.7	0.8	-	71.6
Nini	82.9	2.7	3.7	0.1	299.8
Ravn	-	-	-	-	-
Solsort	64.7	2.1	1.5	-	-
Total	2,667.2	86.0	89.6	69.1	7,701.5

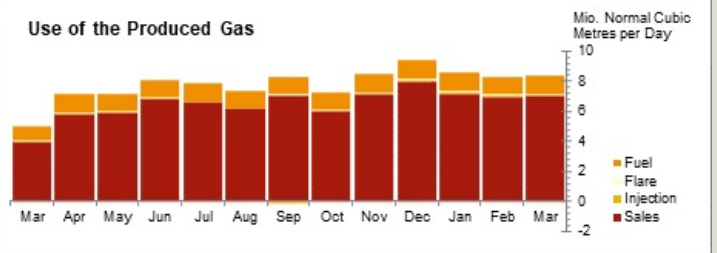
Water Production



Use of produced gas, MM Nm³

	March 2026		Dec25- Feb26	Dec24- Feb25	This year
	Monthly	Daily Avg.	Daily Avg.	Daily Avg.	
Fuel	37.0	1.2	1.2	1.1	109.4
Flare	2.2	0.1	0.1	0.1	6.0
Injection	0.5	0.0	0.1	0.0	7.1
Sales	219.5	7.1	7.4	5.3	636.4
Total	259.3	8.4	8.8	6.5	759.0

Use of the Produced Gas



Notes:

Sif and Igor production is included in Halfdan production.

Digit grouping symbol is a comma "," and decimal symbol is a dot ".".

Nm3 (normal cubic metres) is at standard conditions 0°C and 1,01325 bar.

Small differences between the total for "gas" and "use of produced gas" can occur. Earlier these differences were corrected, but this is not done anymore.

Preliminary data for Gas Injection

END