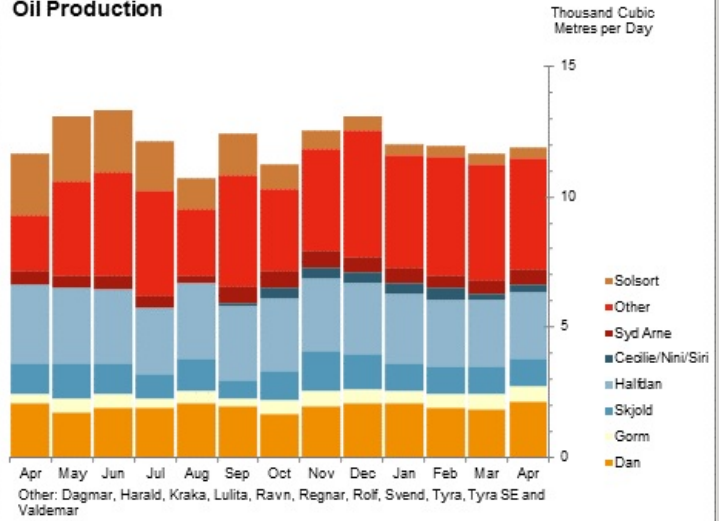


Danish Production of Oil, Gas and Water for April 2026

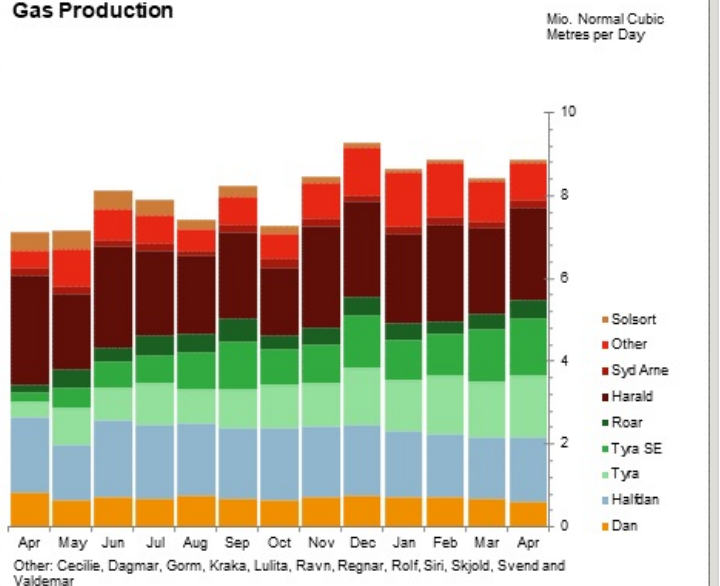
Oil, M m ³	April 2026		Jan26-Mar26	Jan25-Mar25	This year
	Monthly	Daily Avg.	Daily Avg.	Daily Avg.	
Dan	64.7	2.2	2.0	2.2	241.4
Gorm	17.3	0.6	0.5	0.3	62.9
Skjold	31.2	1.0	1.1	0.9	129.1
Tyra	37.5	1.3	1.2	0.3	148.4
Rolf	1.7	0.1	0.1	0.0	7.2
Kraka	0.6	0.0	0.4	0.2	33.4
Dagmar	-	-	-	-	-
Regnar	-	-	-	-	-
Valdemar	40.4	1.3	1.4	0.3	162.8
Roar	6.6	0.2	0.1	0.1	18.3
Svend	-	-	-	-	-
Harald	19.6	0.7	0.7	0.5	78.9
Lulita	-	-	-	-	-
Halfdan	76.5	2.6	2.5	3.0	305.9
Siri	3.4	0.1	0.2	-	19.5
Syd Arne	17.1	0.6	0.5	0.6	64.6
Tyra SE	21.3	0.7	0.6	0.1	76.2
Cecilie	1.7	0.1	0.0	-	6.0
Nini	5.2	0.2	0.2	-	20.3
Ravn	-	-	-	-	-
Solsort	12.4	0.4	0.4	2.5	51.1
Total	357.1	11.9	11.9	11.0	1,426.0

Oil Production



Gas, MM Nm ³	April 2026		Jan26-Mar26	Jan25-Mar25	This year
	Monthly	Daily Avg.	Daily Avg.	Daily Avg.	
Dan	18.0	0.6	0.7	0.8	82.0
Gorm	5.4	0.2	0.1	0.0	15.7
Skjold	4.6	0.2	0.2	0.2	26.8
Tyra	44.6	1.5	1.3	0.5	164.0
Rolf	0.6	0.0	0.0	0.0	1.8
Kraka	0.4	0.0	0.0	0.0	2.6
Dagmar	-	-	-	-	-
Regnar	-	-	-	-	-
Valdemar	13.2	0.4	0.6	0.1	65.4
Roar	14.5	0.5	0.4	0.2	47.3
Svend	-	-	-	-	-
Harald	67.0	2.2	2.2	1.3	264.0
Lulita	-	-	-	-	-
Halfdan	47.0	1.6	1.5	1.8	186.2
Siri	1.3	0.0	0.2	-	19.2
Syd Arne	4.8	0.2	0.2	0.2	18.6
Tyra SE	41.0	1.4	1.1	0.3	137.4
Cecilie	0.4	0.0	0.0	-	1.2
Nini	0.6	0.0	0.0	-	1.9
Ravn	-	-	-	-	-
Solsort	2.3	0.1	0.1	0.5	9.3
Total	265.6	8.9	8.6	6.0	1,043.6

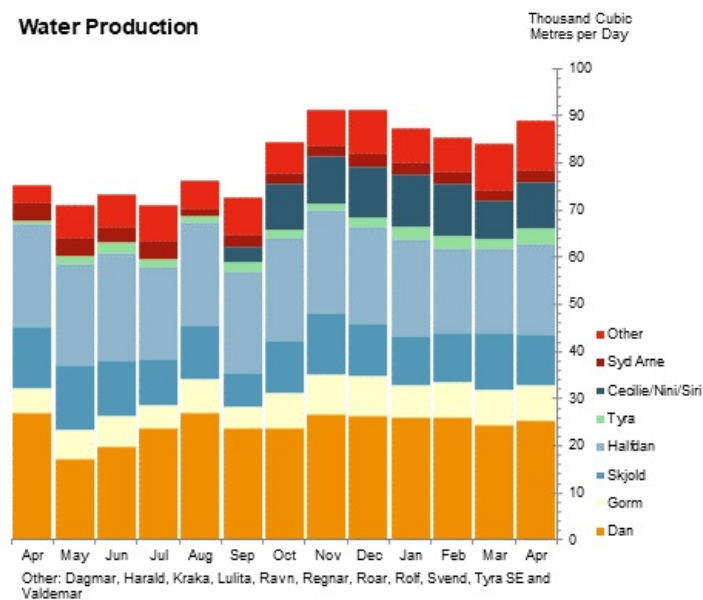
Gas Production



Water, M m ³	April 2026		Jan26-Mar26	Jan25-Mar25	This year
	Monthly	Daily Avg.	Daily Avg.	Daily Avg.	
Dan	759.5	25.3	25.5	25.8	3,053.2

Gorm	223.8	7.5	7.3	3.9	879.3
Skjold	323.7	10.8	10.9	7.9	1,308.2
Tyra	93.2	3.1	2.4	1.0	313.2
Rolf	20.7	0.7	0.7	0.4	82.6
Kraka	15.1	0.5	1.3	0.9	130.1
Dagmar	-	-	-	-	-
Regnar	-	-	-	-	-
Valdemar	70.1	2.3	2.5	0.3	296.1
Roar	141.1	4.7	2.3	0.9	352.1
Svend	-	-	-	-	-
Harald	0.1	0.0	-	0.0	0.1
Lulita	-	-	-	-	-
Halfdan	584.3	19.5	18.9	20.2	2,284.3
Siri	166.5	5.5	5.8	-	689.3
Syd Arne	80.5	2.7	2.6	3.6	313.8
Tyra SE	60.9	2.0	1.2	0.3	167.4
Cecilie	32.3	1.1	0.8	-	103.9
Nini	97.3	3.2	3.3	-	397.1
Ravn	-	-	-	-	-
Solsort	67.3	2.2	1.8	-	-
Total	2,736.2	91.2	87.4	65.3	10,370.3

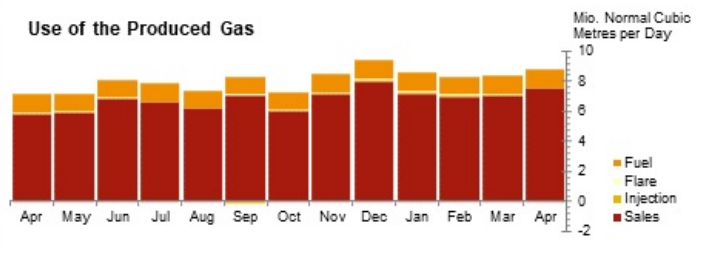
Water Production



Use of produced gas, MM Nm³

	April 2026		Jan26-Mar26	Jan25-Mar25	This year
	Monthly	Daily Avg.	Daily Avg.	Daily Avg.	
Fuel	37.4	1.2	1.2	1.0	146.8
Flare	2.2	0.1	0.1	0.1	8.3
Injection	0.3	0.0	0.1	0.0	7.4
Sales	225.8	7.5	7.1	4.9	862.2
Total	265.7	8.9	8.4	6.0	1,024.7

Use of the Produced Gas



Notes:

Sif and Igor production is included in Halfdan production.

Digit grouping symbol is a comma "," and decimal symbol is a dot ".".

Nm3 (normal cubic metres) is at standard conditions 0°C and 1,01325 bar.

Small differences between the total for "gas" and "use of produced gas" can occur. Earlier these differences were corrected, but this is not done anymore.

Preliminary data for Gas Injection

END