

Session 4

Mitigation possibilities for power quality and operational issues in relation to RE integration in distribution networks

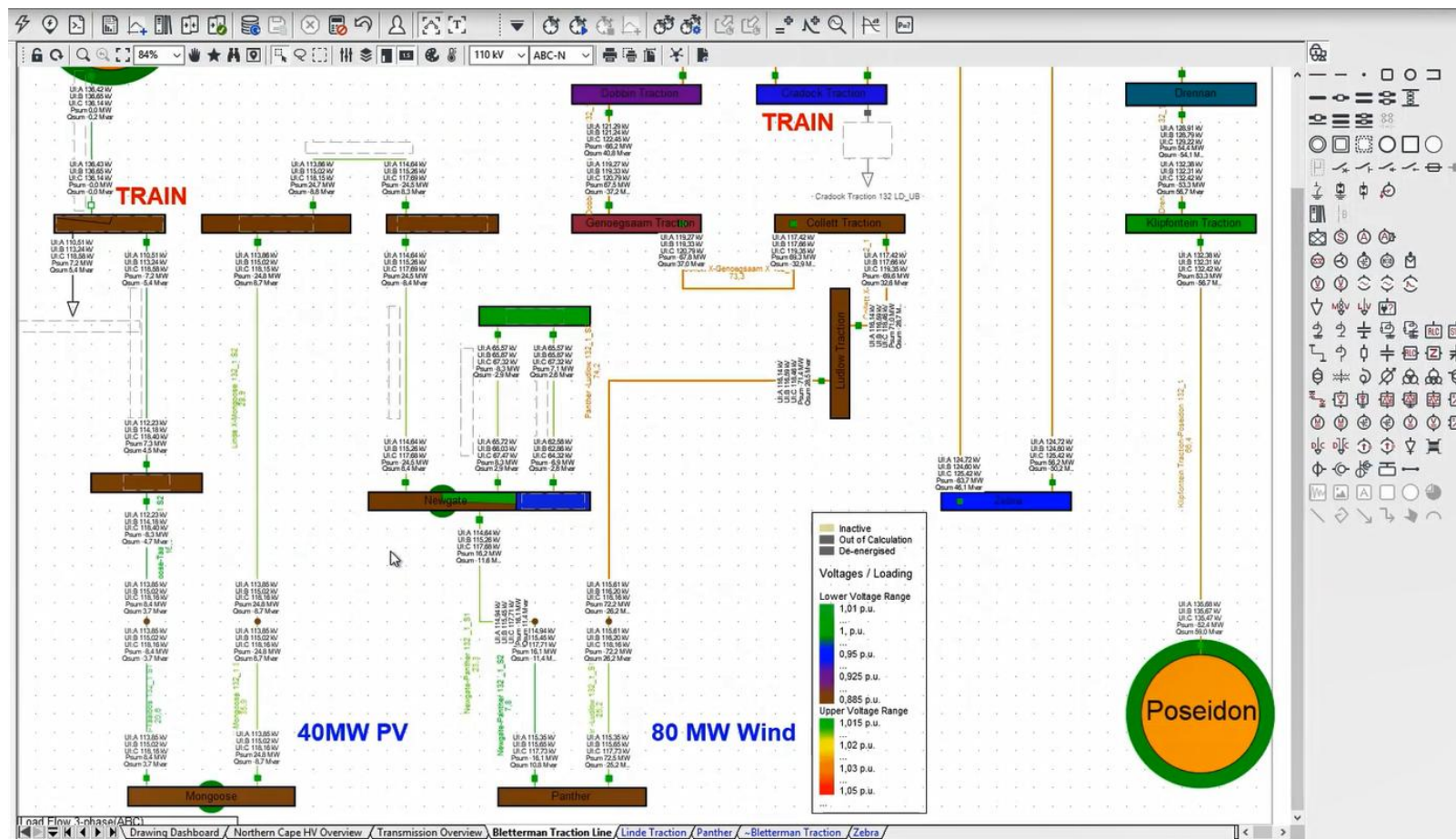


Agenda for Session 4

- ESKOM Power Factory grid model
- Voltage unbalance due to traction
- RE in the traction grid



Follow the recorded session in Power Factory



Exersice

- Which relay protection is tripping – under or over voltage?
- Is the model representative for the issue?
- What can be furhter analysed?